



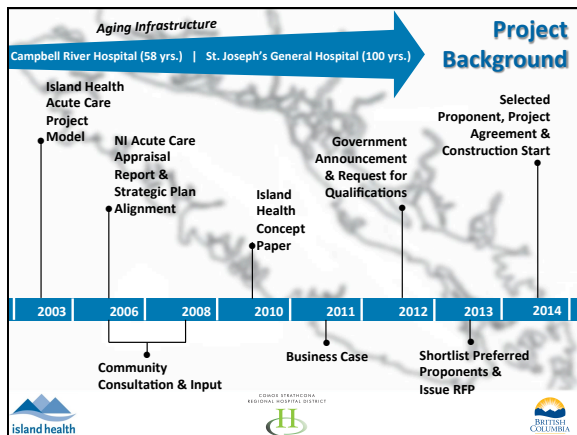
### North Island Hospitals Project

	<b>95 Beds</b>	<b>Campbell River Hospital</b> 375 2nd Avenue
	<b>32,316 m<sup>2</sup></b>	
	<b>\$274.5 M</b>	<b>40% Comox-Strathcona Regional Hospital District</b>

	<b>153 Beds</b>	<b>Comox Valley Hospital</b> 101 Lerwick Road
	<b>39,826 m<sup>2</sup></b>	
	<b>\$331.7 M</b>	<b>40% Comox-Strathcona Regional Hospital District</b>

island health  
COMOX STRATHCONA REGIONAL HOSPITAL DISTRICT  
BRITISH COLUMBIA



### Project Schedule

Design and Construction of New Facilities	July 2014 – April 2017
Service Commencement – Project Completion	April 30, 2017
Commissioning and Transition Period	Summer – Fall 2017
Move-In	Late Fall 2017

island health  
COMOX STRATHCONA REGIONAL HOSPITAL DISTRICT  
BRITISH COLUMBIA

### Project Scope

	Campbell River	Comox Valley
Parking	408 parking stalls (178 structured)	655 parking stalls (362 structured)
Sustainability	LEED Gold	
Inpatient beds	<b>95</b>	<b>153</b>
• Medical-Surgical	72	105
• Intensive Care	6	8
• Telemetry	7	10
• Labour, Delivery, Recovery, Postpartum	7	9
• Pediatric	3	6
• Psychiatry	-	11
• Psychiatry Intensive Care	-	4

island health  
COMOX STRATHCONA REGIONAL HOSPITAL DISTRICT  
BRITISH COLUMBIA





### Local Hires (63% - March Reporting)

Site	Local*	North Island**	Remainder Vancouver Island	Mainland & Other	Total per site
Campbell River	57	1	21	41	120
Comox Valley	146	0	48	10	204
<b>Total</b>	<b>203</b>	<b>1</b>	<b>69</b>	<b>51</b>	<b>324</b>



\*Local – Campbell River, Comox, Courtenay, Cumberland (& surrounding unincorporated areas)  
\*\*North Island – North/East/West of Campbell River

island health  
COMOX STRATHCONA REGIONAL HOSPITAL DISTRICT  
BRITISH COLUMBIA

## Apprenticeship Program

Combined Site Apprentice (March Reporting)		
Plumbing		15
Carpentry		27
Electrical		3
Iron Workers		6
<b>Total</b>		<b>51</b>



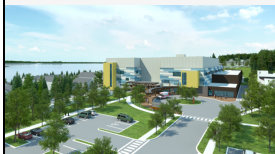




### Public-Private Partnerships (PPP)

... according to the Province of British Columbia (Partnerships BC)

- **Timely Delivery** •
- **Risk Transfer** •
- **Greater Incentive to Innovate** •
- **Attract International Investment** •
- **Job Creation** •

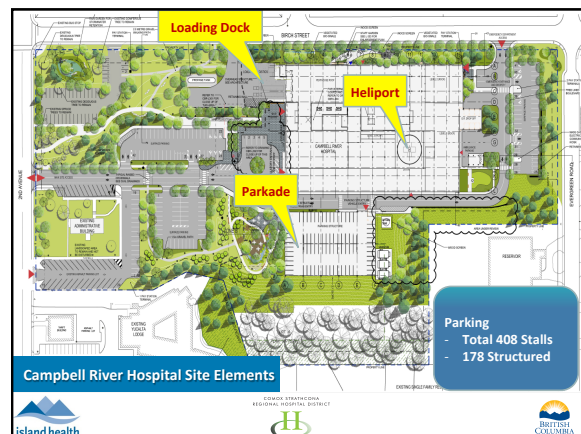
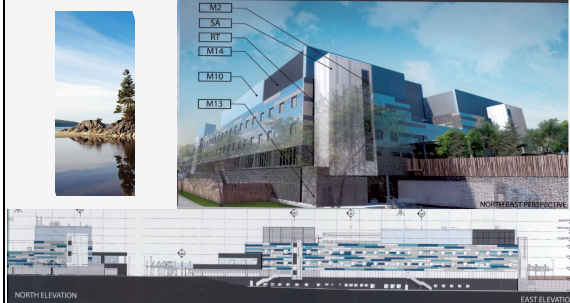
## Construction – Technical Aspects



## Construction Status



## Campbell River Hospital The Ocean



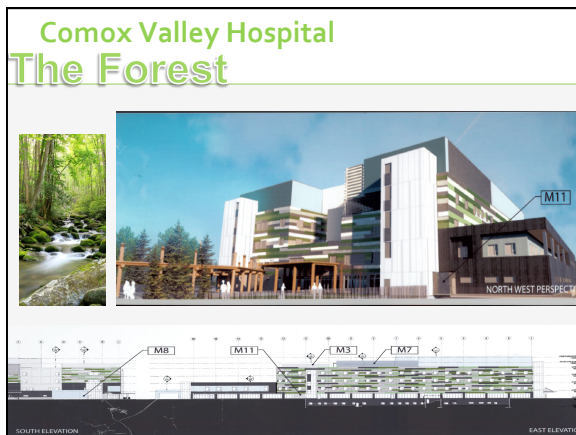




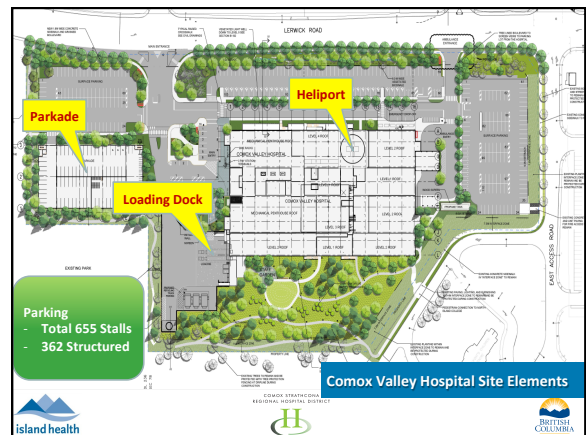
Campbell River  
February 27<sup>th</sup>, 2015



Campbell River  
April 7<sup>th</sup>, 2015



## Comox Valley Hospital The Forest



Comox Valley  
February 24<sup>th</sup>, 2015

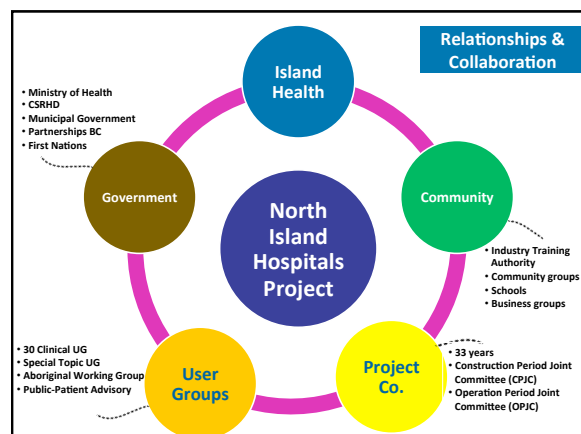
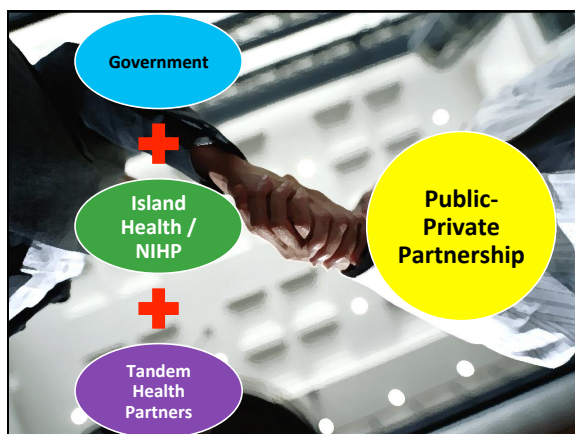


Comox Valley  
April 7<sup>th</sup>, 2015

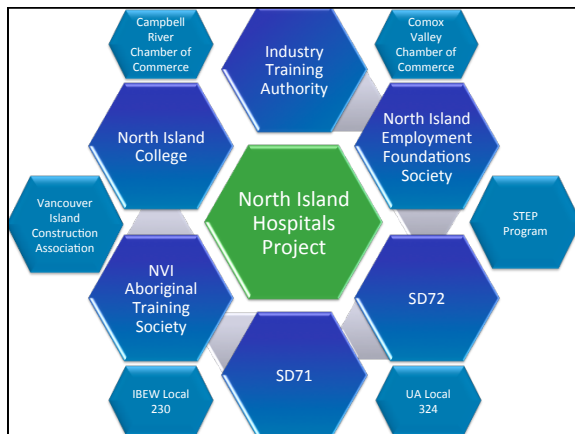


### Important Dates

Date	Activity
May – June 2014	Schematic Design
July – December 2014	Design Development Cycles & Review
July 2014	Excavation Permit (Soil removal & Deposition)
August 2014	Temporary Retaining Wall Permit - Campbell River
August/September 2014	Foundation Permit
December 2014	Superstructure Permit
February 2015	Building Permit
March 2015	Approval of 50% Issued for Construction Drawings (IFCs)
September 2015	Approval of 95% Issued for Construction Drawings (IFCs)
Spring 2017	Occupancy Permit







**North Island Hospitals Project Website**

For more information and updates,  
visit our website:

<http://nihp.viha.ca/>



island health

ESQUATEL STRATEGIC  
ESQUATEL HOSPITAL DISTRICT

DRILLING  
COLUMBIA